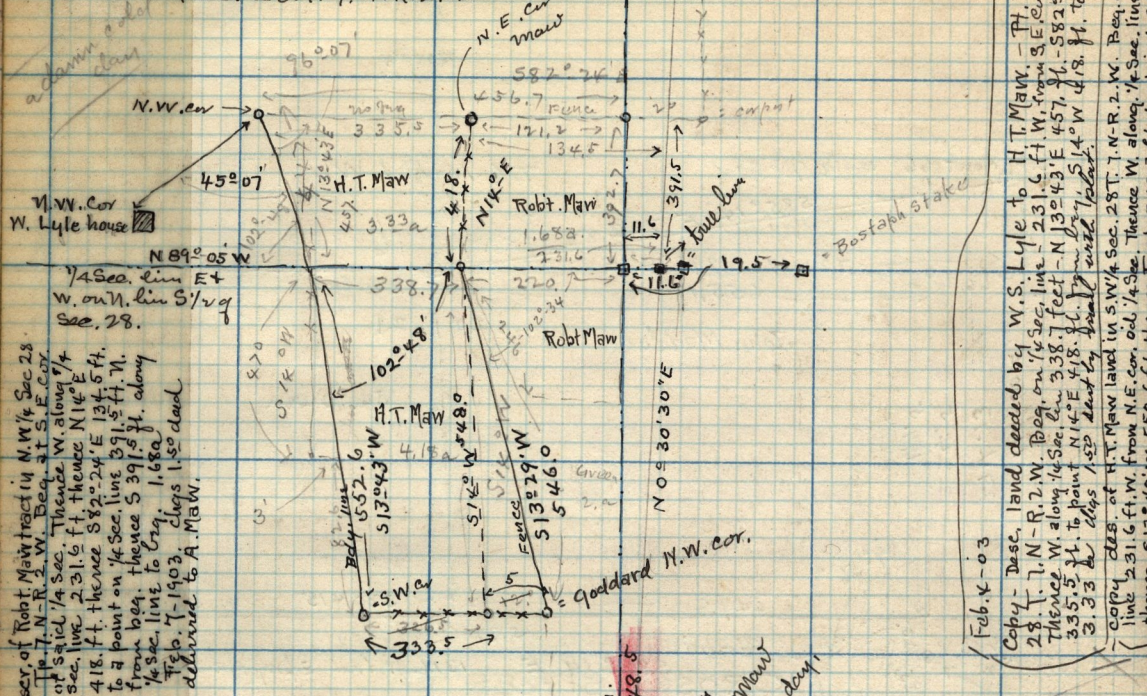


Feb 2 - 1903. Survey made for
H.T. Maw - Robt Maw at Plain City
in N.W. 1/4 Sec. 28. T. 7. N. R. 2. W.



Deer of Robt Maw tract in N.W. 1/4 Sec 28.
Tp. 7. N. R. 2. W. Bq. 28. S. E. cor
of said 1/4 Sec. Thence W. along 1/4
Sec. line 231.6 ft. thence N 14° E
418. ft. thence S 82° 24' E 134.5 ft.
to a point on 1/4 Sec. line 391.5 ft. N.
from beg. thence S 39° 51' along
1/4 Sec. line to Crq. 1.68a
Feb. 7 - 1903. Chgs 1.50 dead
delivered to A. Maw.

This line
p. 23
8 ft. W
opp. it
in M. M.
Sec. 28

Feb. X-03
Copy - Desc. land deeded by W. S. Lyle to H. T. Maw. - Th. N. W. 1/4 Sec.
28. T. 7. N. R. 2. W. Bq. 28. S. E. cor. 1/4 Sec. line 231.6 ft. W. from S. E. cor. old 1/4 Sec.
Thence W. along 1/4 Sec. line 338.7 feet - N 13° 43' E 457.0 ft. - S 82° 24' E
335.5 ft. to point N 14° E 418. ft. from S. E. cor. to Crq.
33.3 chgs 1.50 dead to H. T. Maw
copy des. of H. T. Maw land in S.W. 1/4 Sec. 28. T. 7. N. R. 2. W. Bq. on 1/4 Sec.
line 231.6 ft. W. from N.E. cor. old 1/4 Sec. Thence W. along 1/4 Sec. line 338.7 ft.
thence East 342.3 ft. to a point S 13° 29' W
56.6 ft. from S.W. cor. to H. T. Maw

* Non + correct traverse table of Robt Maw tract
Bq. 28. S. E. cor. of N.W. 1/4 Sec. 28.

	N	S	E	W
N 89° 05' W	231.6	3.7		231.6
N 14° E	418.0	405.6	101.1	
S 82° 24' E	134.5		172	103.3
S 0° 30' 30" W	391.5			2.8
	409.3	409.3	234.2	234.4

NOE 15' 30" E. random.
2648.5
26 x 8.0
m. road by
Mawes + H.T. Maw
on very cold day

See Plat Book page 16

To S.W. cor 28
←

2663.23

1/4 Sec. Stone on S. line of Sec. 28.
Tp. 7. N. R. 2. W.
in Carvers land

S. E. cor 28. 28.

Traverse table of the Robt Maw tract

Course	Dist.	N	S	E	W
N 14° E	418.0	405.6		101.1	
S 82° 24' E	121.7		16.0	120.1	
S 0° 15' W	392.7		392.7		1.7
N 89° 05' W	220.0	3.5			220.0
		409.1	408.7	221.2	221.7

see book 1 - page 84
Traverse table of H.T. Maw tract in N.W. 1/4 Sec 28.

Course	Dist.	N	S	E	W
N 13° 43' E	457.0	444.0		106.3	
S 82° 24' E	335.5		44.3	332.5	
S 14° W	418.0		405.6		101.1
N 89° 05' W	338.7	5.4			338.6
		449.4	449.9	440.8	439.7

W. from S.E. cor. 558.7 ft.
116
N 57° 0.3

Traverse of the H.T. Maw tract in S.W. 1/4 Sec. 28. Bq. 28. S. E. cor. 1/4 Sec. 28. Thence W. along 1/4 Sec. line 231.6 ft. N 89° 05' W from N.E. cor. 1/4

Course	Dist.	N	S	E	W
N 89° 05' W	338.7	5.4			338.6
S 13° 43' W	552.6		526.3		131.0
E	342.3			342.3	
N 13° 29' E	546.0	530.9		127.3	
		532.5	526.3	469.6	